

AEROPURGE SYSTEM

GOT DUST?

FACTORY PROVEN

EX31 AUTOMATION, LLC

AEROPURGE

MAKING SENSORS CLEAN AGAIN

New for Fall 2025

AeroPurge GoCovers

Our latest complimentary systems offering is the AeroPurge product series. These are designed to keep your Gocator clean using dry, compressed air. Too often the issues that most of our customers face is around keeping camera lenses clean. We have spent the last few years developing this product line and are excited to see how well we can enable our customers to win by achieving higher uptime in your manufacturing process.

Have an issue keeping your sensor clean? Contact us today for a demonstration system. Maybe test before you buy?

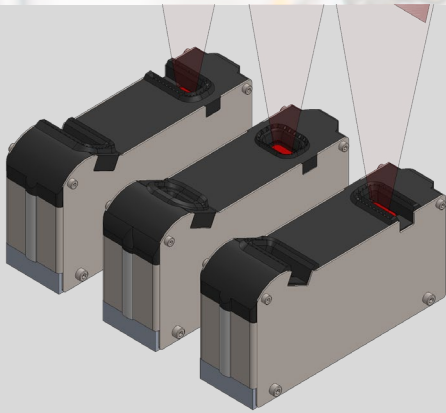
Operation

The AeroPurge GoCover series is designed to keep your Gocator free from debris. It uses pneumatic pressure to operate in two modes:

Mode 1: Continuous Clean - Feed the cover assembly with clean dry air and maintain positive pressure area above both sensor faces. This keeps most small foreign matter off your sensor's emitter and receiver.

Mode 2: Purge - Positive air not enough? Add in a quick burst of higher-pressure air for maintaining the best possible clean sensor faces.

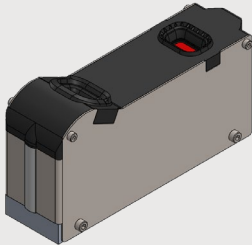
MODE



AEROPURGE

Introducing your Gocator cleaning solution. Our AeroPurge GoCover kits use center directional bursts of air to clean dirt and debris from Gocator sensors and fit seamlessly over the face of your new or existing Gocators.

Fits 2100/2300, 2400, 2500, & 2600 series LMI Gocators. Pair with a GoPlate for special pricing.



2100/2300 Series

List \$550



2400 Series

List \$550



2500 Series

List \$550



2600 Series

List \$550

2100/2300 Series

Assembly Number	Fits Gocators
116-3010	2130/2330
116-3013	2140/2340
116-3016	2150/70/75/80 & 2350/70/75/80

2400 Series

Assembly Number	Fits Gocators
116-3019	2420
116-3022	2430
116-3025	2440
116-3028	2450

2500 Series

Assembly Number	Fits Gocators
116-3031	2520
116-3034	2530
116-3037	2540/50

2600 Series

Assembly Number	Fits Gocators
116-3040	2630
116-3043	2640
116-3046	2650/70/90



Automation, LLC

607 Roxbury Industrial
Center, Charles City, VA,
USA

Main Number: 804-829-4088

Email: Info@ex31automation.com

Open 09:am - 05:pm