

## 2100-2300 Go-Plates

Utilize the Go-Plate for your sensor mount today. As standard, these pair with the precision pivot hinge for a keyed alignment.



**116-0134**

List \$220

### **Part# 116-0134**

Fits both 2130 and 2330 LMI 3D Gocator



**116-0127**

List \$220

### **Part# 116-0127**

Fits both 2140 and 2340 LMI 3D Gocator

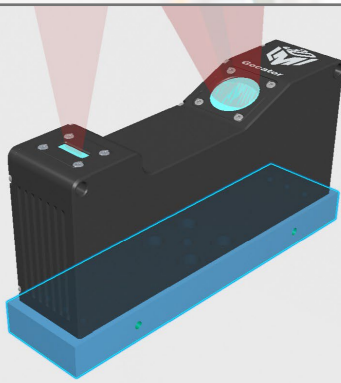


**116-0129**

List \$220

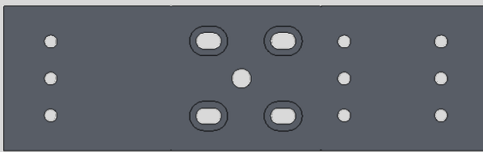
### **Part# 116-0129**

Fits both 2150/70/80 and 2350/70/80, and **2490** LMI 3D Gocator



## 2400 Go-Plates

Utilize the Go-Plate for your sensor mount today. As standard, these pair with the precision pivot hinge for a keyed alignment.

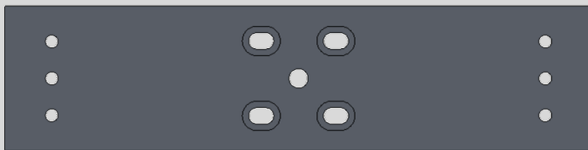


**116-0126**

List \$220

### **Part# 116-0126**

Fits both 2420 and 2430 LMI 3D Gocator

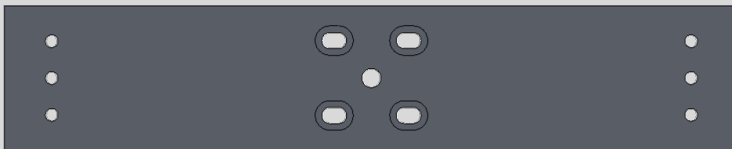


**116-0104**

List \$220

### **Part# 116-0104**

Fits 2440 LMI 3D Gocator

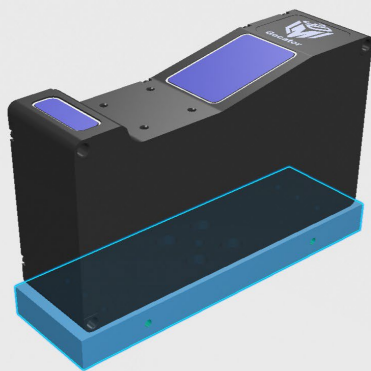


**116-0135**

List \$220

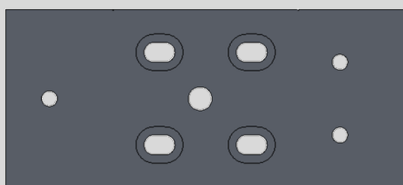
### **Part# 116-0135**

Fits 2450 LMI 3D Gocator



## 2500 Go-Plates

Utilize the Go-Plate for your sensor mount today. As standard, these pair with the precision pivot hinge for a keyed alignment.

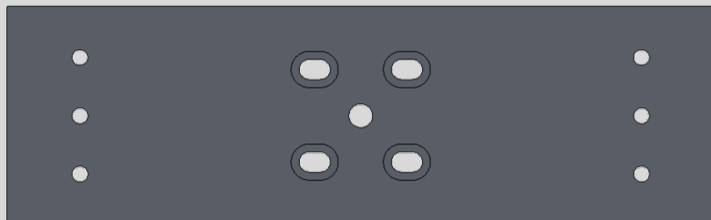


**116-0141**

List \$220

### Part# 116-0141

Fits both 2520 and 2530 LMI 3D Gocator



**116-0139**

List \$220

### Part# 116-0139

Fits both 2540 and 2550 LMI 3D Gocator

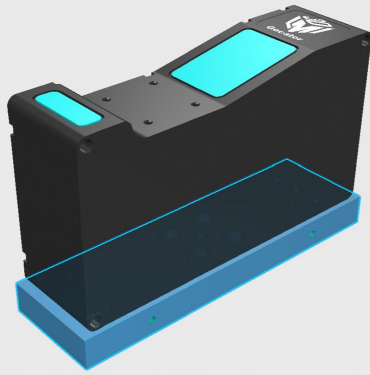


**116-XXXX**

List \$325

### Part# 116-XXXX

Custom offset plates allow you to run different sensors on the same frame if they are the same series. Contact us today for support with your unique layout requirements.



## 2600 Go-Plates

Utilize the Go-Plate for your sensor mount today. As standard, these pair with the precision pivot hinge for a keyed alignment.



**116-0285**

List \$220

### Part# 116-0285

Fits 2630 LMI 3D Gocator



**116-0139**

List \$220

### Part# 116-0139

Fits 2640 LMI 3D Gocator



**116-0286**

List \$220

### Part# 116-0286

Fits 2650/70/90 LMI 3D Gocator