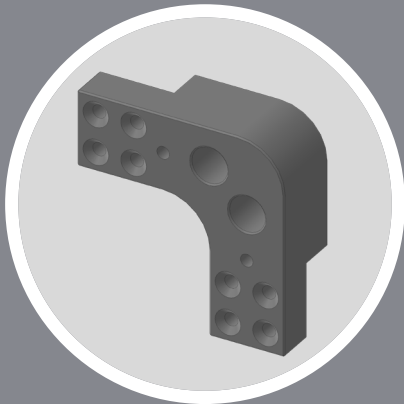


## PIVOT HINGE

**PART# 116-0504 - LIST: \$475**

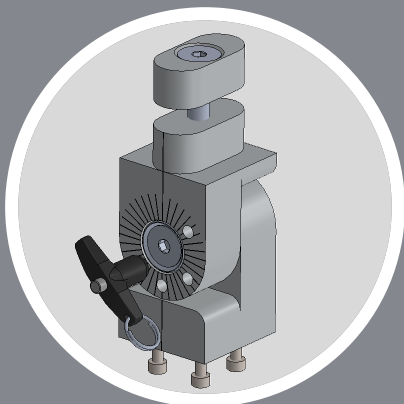
This precision hinge connects the frame members to the Go-Plates. It can be used with or without the quick pin. The quick pin allows for 7.5-degree incremental adjustments between 0 and 180 degrees.



## FRAME CORNERS

**PART# 116-0206 - LIST: \$340**

This precision frame corner connects the frame members at near perfect 90-degree angles. It can be used with end bars and cross bars.



## PIVOT HINGE 90

**PART# 116-0525 - LIST: \$475**

This precision hinge connects the frame members to the Go-Plates at a 90-degree angle. Same 7.5-degree adjustability. It can be used with or without the quick pin. The quick pin allows for 7.5-degree incremental adjustments between 0 and 180 degrees.

# HINGES AND CORNERS

Call us today for a consultation.  
We offer a free 3D model and budgetary quote within 5 business days.



Automation, LLC

607 Roxbury Industrial  
Center, Charles City, VA,  
USA

Main Number: 804-829-4088

Email: [Info@ex31automation.com](mailto:Info@ex31automation.com)

Open 09:am - 05:pm