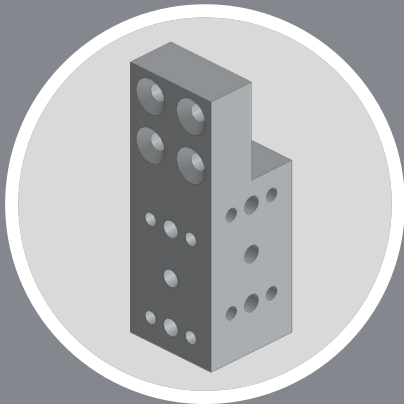


BAR MOUNT

PART# 116-0519 – LIST: \$250

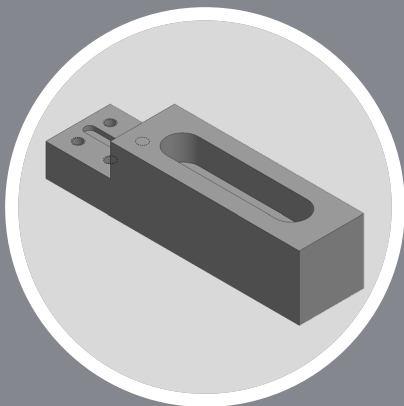
Used for mounting single frame members to your machinery. Shoulder bolt allows for easy secure mounting when paired with our tie in brackets.



UNIVERSAL MOUNT

PART# 116-0520 – LIST: \$300

This universal mount allows you to mount flush to a surface. Combination of threaded and clearance holes, design into your process today. Call for a free CAD model.



RIGHT ANGLE END BAR

PART# 116-0527 – LIST: \$300

Same great precision frame components, allowing you to mount on alternate surfaces with 90° orientation change from our single plane components. Pairs great with a Precision Corner. 7" standard length; contact us for pricing on custom lengths.

MOUNTING SOLUTIONS

Call us today for a consultation.
We offer a free 3D model and budgetary quote within 5 business days.



TIE IN BRACKET

PART# 116-0005 – LIST: \$250

Aluminum extrusion tie in bracket for our precision frames. Comes with shoulder bolt and locking nut. Typically, this is used in combination with one fixed and one slotted bracket mount to keep your precision frame true and flat.



EXTRUSION FRAME ADAPTOR

PART# 116-0284 – LIST: \$300

Our universal extruded aluminum mount allows for easy adaption of the Arch-IQ precision frame to your existing machinery. Configurable in two different attachment methods with the same mount, it enables you to quickly position your vision system to the perfect location.



FRAME SUPPORT BRACKET

PART# 116-0019 – LIST: \$150

The frame support bracket is a key component for frame swapping. Place underneath the sides of the precision frame inside the arch and now you can hot swap your sensor frame without stopping production.

BRACKETS & ADAPTORS

Call us today for a consultation.
We offer a free 3D model and budgetary quote within 5 business days.